

Word Problems

Challenge Cards



Word Problems

1. Toby has saved up \$52.80. His big sister has saved up \$123.60.

How much have they both saved up altogether?



Word Problems

2. The total perimeter of a regular octagon is 296cm.

What is the length of one side?



Word Problems

3. Circle two numbers below that add up to 250.

123	222	109	78	115
	239	86	72	148
201	136	129	97	114

Word Problems

4. Anne has \$8.90. She buys some fruit. Now she has \$5.30.

How much did her fruit cost?



Word Problems

5. A factory makes 3.8 litres of lemonade a minute. How much lemonade is made in 7 minutes?



Word Problems

6. A factory uses 112 kilograms of sugar to make 16 batches of lemonade.

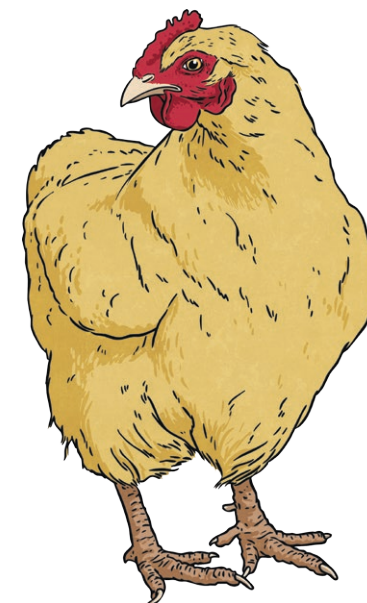
How much sugar is used per batch?



Word Problems

7. For every 7 eggs that Chicken A lays, Chicken B lays 12.

If Chicken A lays 84 eggs, how many eggs does Chicken B lay?



Word Problems

8. Which is greater:

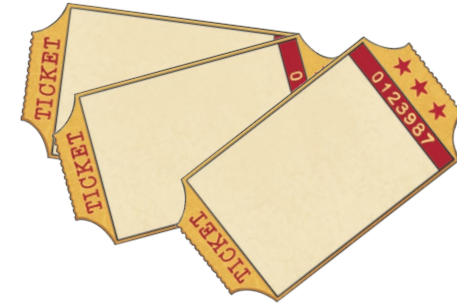
25% of 76 or 20% of 84?



Word Problems

9. 2357 people go to a concert. The tickets cost \$4.70.

How much money was made?



Word Problems

10. Jane travelled 17.6km on a bus, 8.2km by train and then a further 1300m by foot.

How many kilometres did Jane travel in total?



Word Problems

11. What is the total of \$113.60, \$8.80 and \$281.20?



Word Problems

12. An apple costs \$0.40.

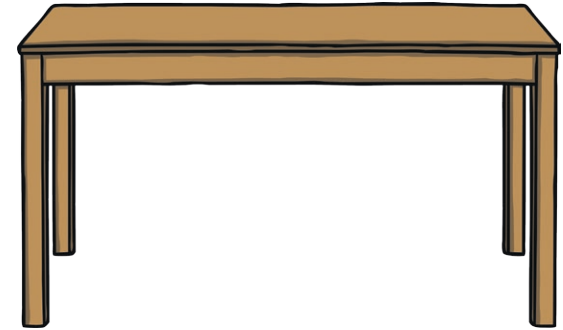
How much would 12 apples cost?



Word Problems

13. There is a 25% reduction off the price of a table.
The original price was \$300.

How much is it now?



Word Problems

14. There are 92 children in a school. One quarter of the year walk to school. 18 children are driven. 23 children cycle.

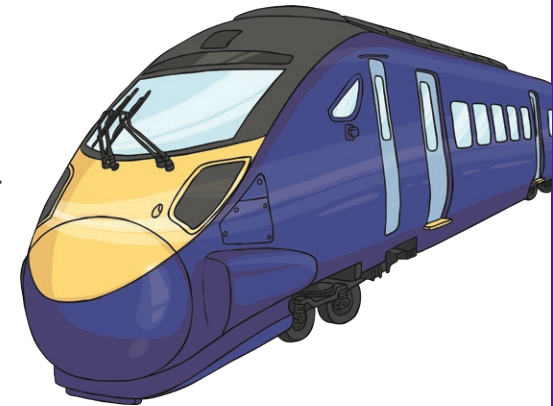
How many children use other forms of transport?



Word Problems

15. 831 are getting on a train. Each carriage seats 60 people.

How many carriages are needed for everyone to be able to sit? How many spare seats are there?



Word Problems

16. 1272 people have bought tickets for a concert.
The venue has 30 rows of 42 seats.

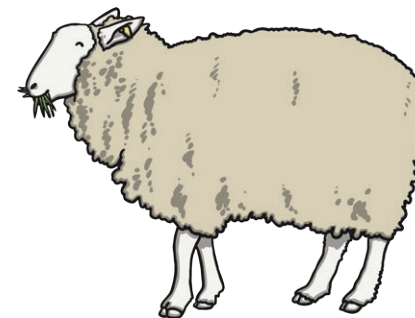
How many people will have to stand?



Word Problems

17. Farmer Jack has 48 sheep. Half of his sheep have twins, $\frac{1}{4}$ have one lamb and two sheep have triplets. $\frac{2}{3}$ of the lambs are male.

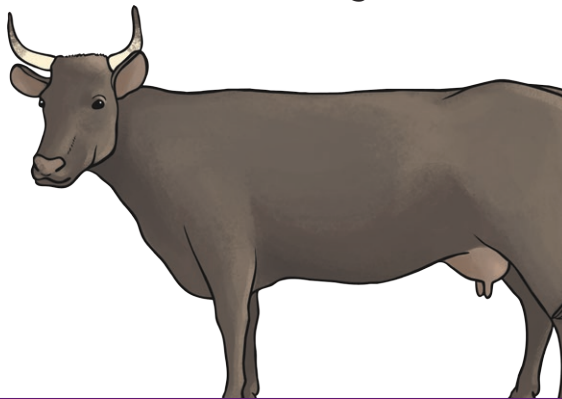
How many female lambs are there?



Word Problems

18. For every male cow on the farm, there are 7 female cows.

If there are 301 female cows, how many male cows are there?



Word Problems

19. I think of a number, add 5.1 and multiply it by 3.5. The answer is 35.

What was my number?



Word Problems

20. A shop made \$32 350 this year. That is \$2 456 better than last year.

How much money did the shop make last year?



Word Problems Answers

1. \$176.40
2. 37cm
3. 114 and 136
4. \$3.60
5. 26.6 litres
6. 7kg
7. 144 eggs
8. 25% of 76 = 19
9. \$11 077.90
10. 27.1km
11. \$403.60
12. \$4.80
13. \$225
14. 28 children
15. 14 carriages; 9 spare seats
16. 12 people
17. 22 lambs
18. 43 cows
19. 4.9
20. \$29 894